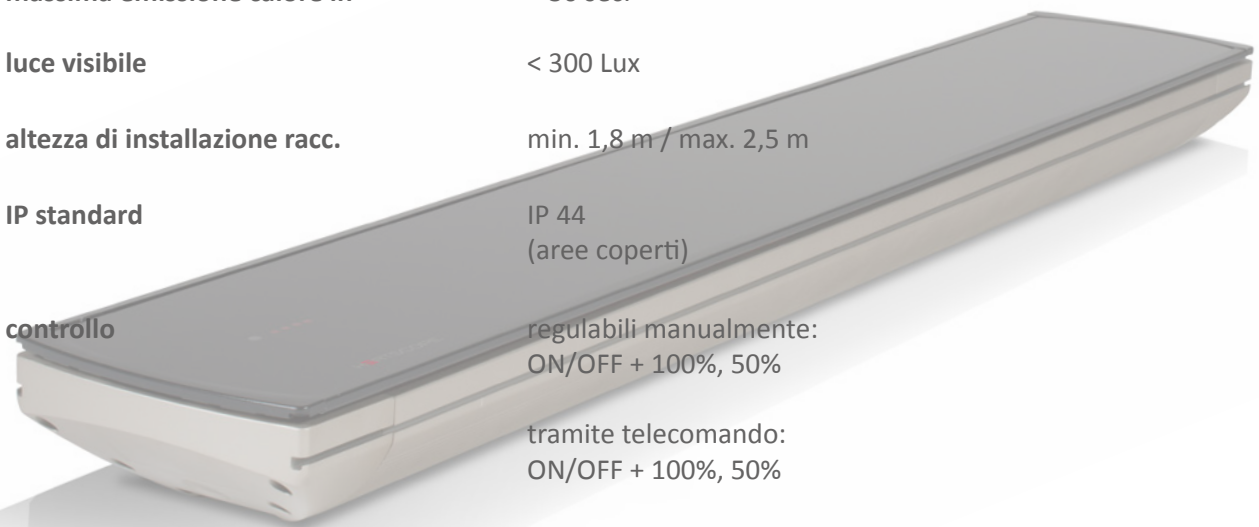


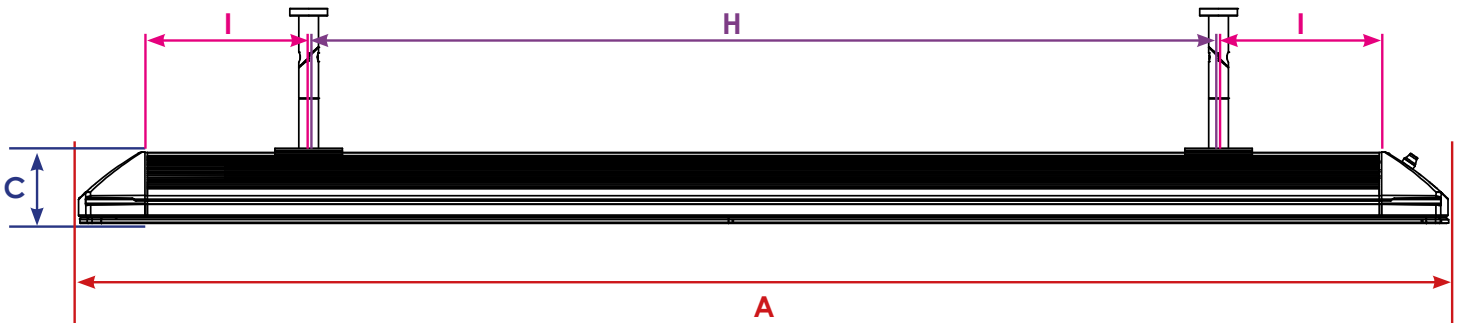
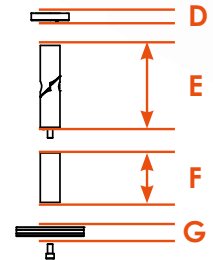
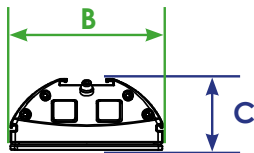
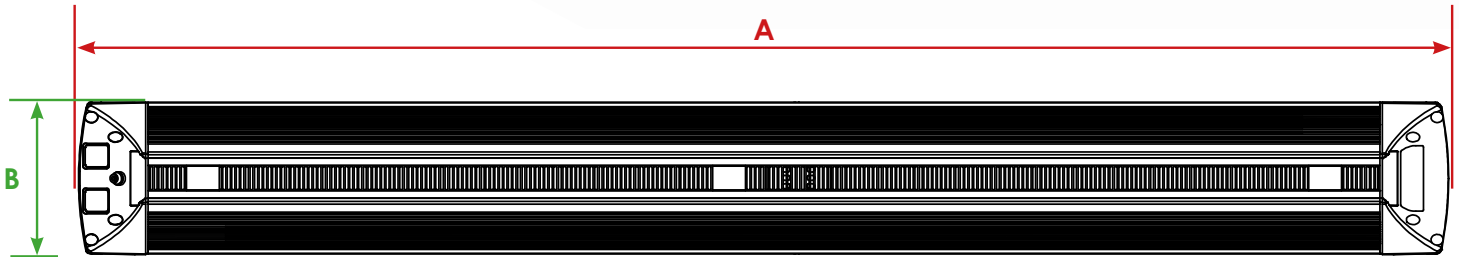
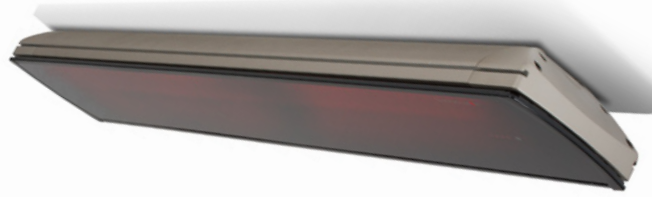
# SPECIFICHE TECNICHE

## HEATSCOPE Vision

<b>tensione</b>	230 V AC ~ – 50/60 Hz
<b>potenza</b>	1600 W / 2200 W / 3200 W
<b>corrente</b>	6,96 A / 9,57 A / 13,91 A
<b>cavo aperto</b>	1,1 m / 3 x 1,5 mm <sup>2</sup> o: 1,1 m / 4 x 1,5 mm <sup>2</sup>
<b>temperatura superficie</b>	300 °C
<b>temperatura corpo</b>	max. 130 °C
<b>temperatura filamento</b>	1200-1300 °C
<b>temperatura colore</b>	1550-1650 K
<b>massima emissione calore in</b>	~ 30 sec.
<b>luce visibile</b>	< 300 Lux
<b>altezza di installazione racc.</b>	min. 1,8 m / max. 2,5 m
<b>IP standard</b>	IP 44 (aree coperti)
<b>controllo</b>	regolabili manualmente: ON/OFF + 100%, 50% tramite telecomando: ON/OFF + 100%, 50%



# HEATSCOPE VISION



	A	B	C	D	E	F	G	H	I
MHS-VE1600 MHS-VT1600	810 mm	184 mm	90 mm	9 mm	100 mm	60 mm	11 mm	≤ 300 mm	≥ 175 mm
MHS-VE2200 MHS-VT2200	1160 mm							≤ 650 mm	≥ 175 mm
MHS-VE3200 MHS-VT3200	1660 mm							≤ 1150 mm	≥ 175 mm